



Perennial Parrot



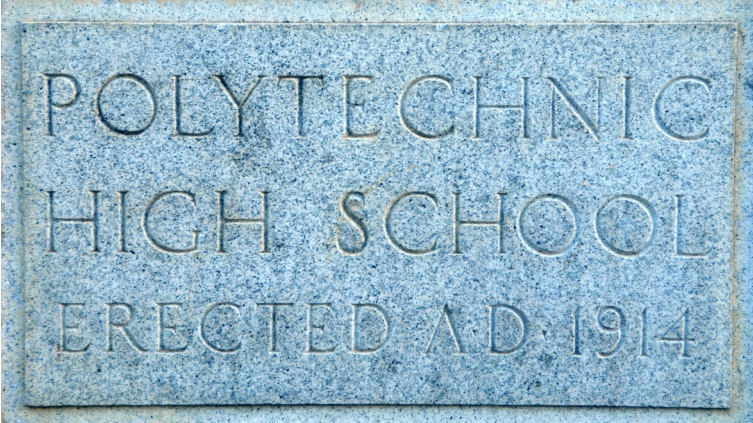
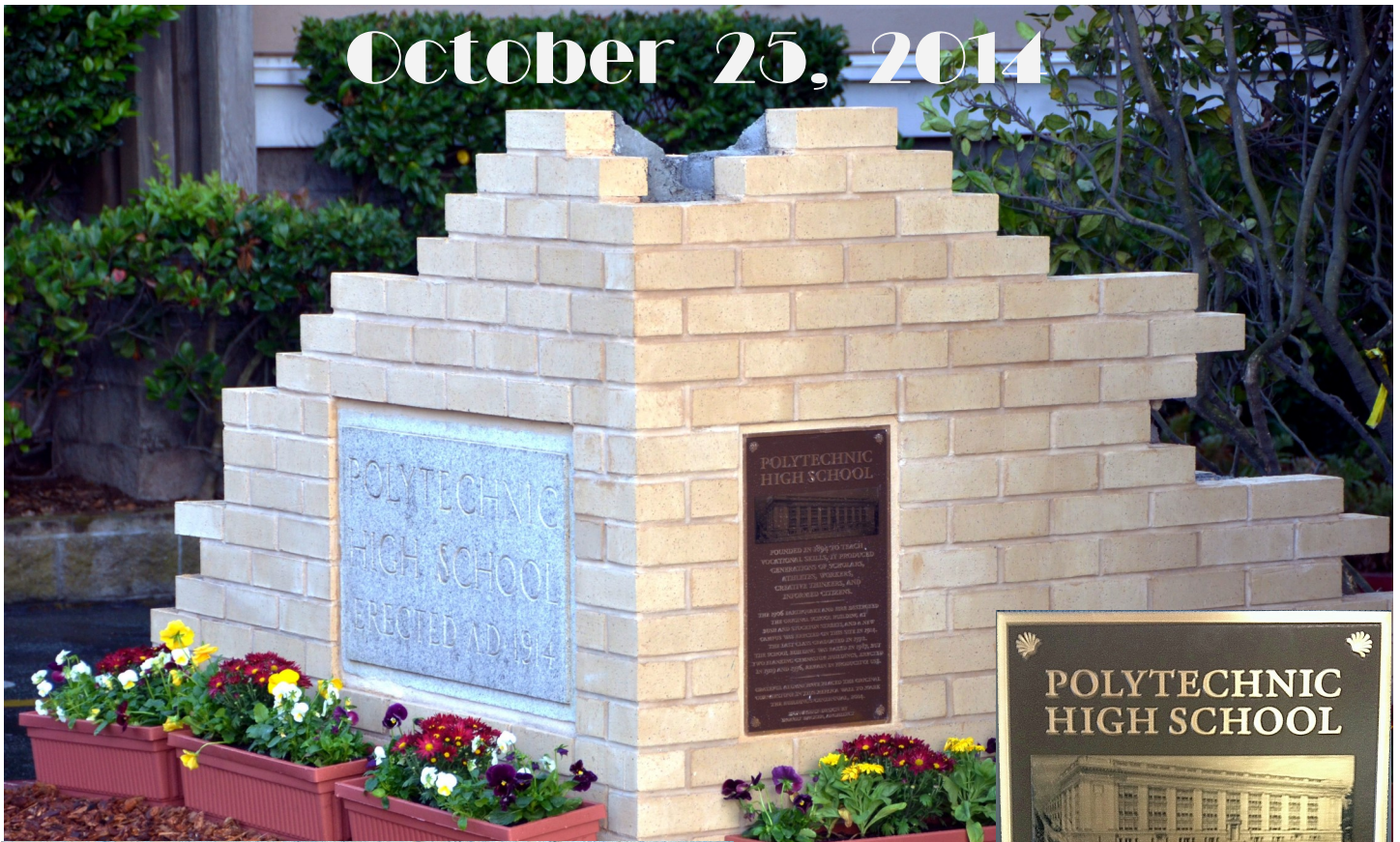
Volume 27 #3

Polytechnic High School ... 1894-1972 ... San Francisco, California

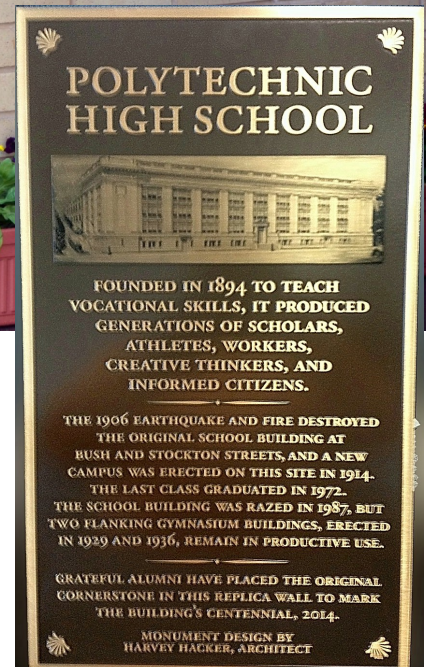
December 2014

Hail Polytechnic

October 25, 2014

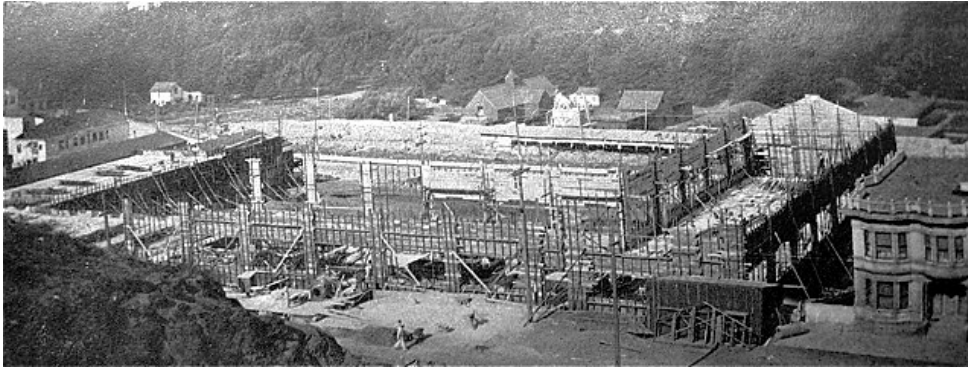


**We're
Loyal
To
You**



A Celebration of 100 Years

1914 — 2014



It's 1911 and construction has begun on what will become our
**GRAND POLYTECHNIC
HIGH SCHOOL**

October 25, 2014
POLYTECHNIC HIGH SCHOOL
Re-Dedication of the POLYTECHNIC CORNERSTONE

Speaker, Don Collins,
Commissioner of Athletics for SFUSD

"Polytechnic is a legendary school; it has already been of interest to me since I became Commissioner. The very thought of a famous school that appeared to be ready to move to a new campus only to have its name cut, its legacy ended is something I always found odd. And then, to see the alumni mold themselves into one of our strongest alumni groups shows the strengths of school bonds even when the school is no more. We wish all of our alumni had the drive of the Poly alumni."

From Angus McFarlane Class of 1965
A Cornerstone Mystery

I went to the library in a last-gasp, Hail-Mary-Pass attempt to find out just when the cornerstone was "installed" and the academic building was formally dedicated. It seems that the school district employed a clipping service to cut out and mount in scrapbooks any references in the newspapers about any San Francisco school. As you know, the last reference to a dedication ceremony was the September 27, 1915 Chronicle item mentioning an October celebration.

I went through the scrapbook at the library and there was just about everything that went on in SF schools except any mention of Poly's formal dedication. Unlike tombstones, it seems that cornerstones are hit and miss as far as history goes. What that leaves us with is a mystery. We know why there were delays in the construction which delayed the completion of the academic building till 1915, but why was the cornerstone etched "1914"? Certainly not a misprint. How close to completion were they when the cornerstone was cut with the words POLYTECHNIC HIGH SCHOOL ERECTED AD 1914 and then work stopped for so long that it was 1915 before the cornerstone was installed. Was money such an issue that it wasn't financially possible to cut a new cornerstone?

Not a big deal as far as I'm concerned. Poly was and Poly always will be, whether it was erected in 1914 or 1915.

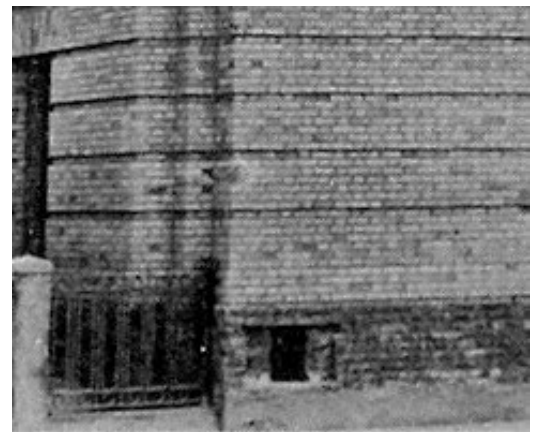
Long live Poly

From Kathy Compagno, Class of S'64

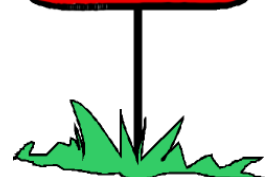
It was a MARVELOUS day, with our Cornerstone's proud return, a century after its original building. MANY THANKS to all who made it possible, beginning with Dagmar and the original ransom, and Rich Eichenbaum for generously sharing this legacy; and all the others through the years but most especially, thanks to CAROL SALE RANDALL, who made this happen now.



Prior to dedication, the location for placement of the Time Capsule and Cornerstone can be seen in the lower North East corner of the main building.

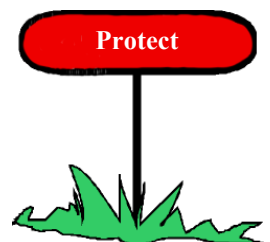
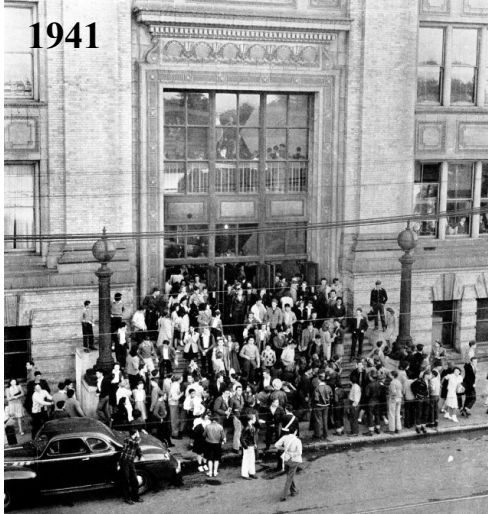


Heed instructions



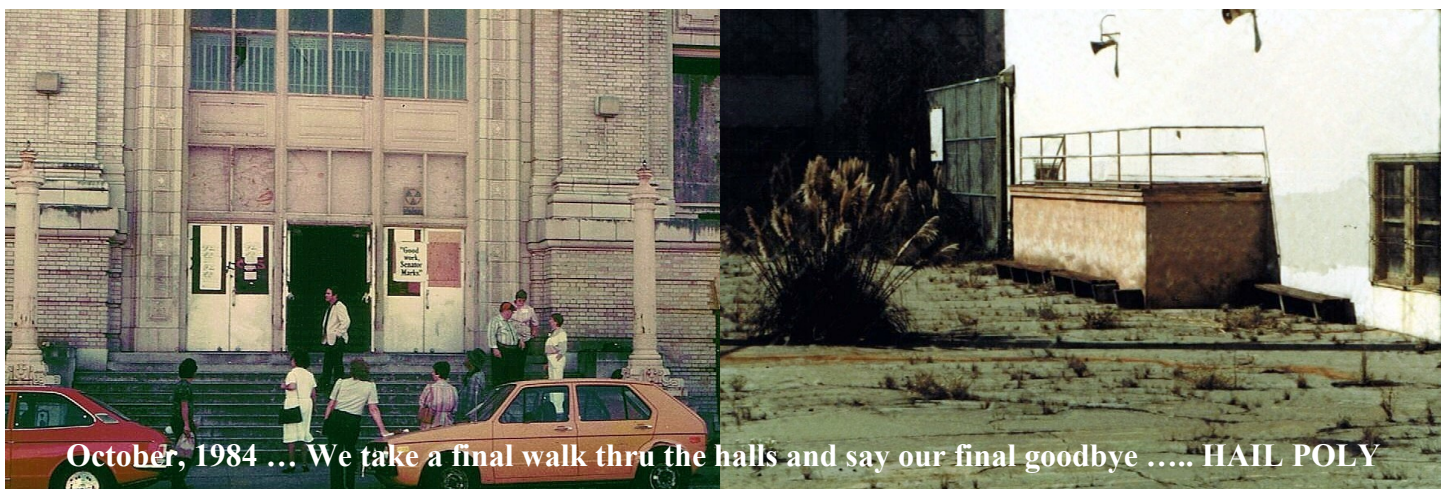
A Celebration of 100 Years

1914 — 2014



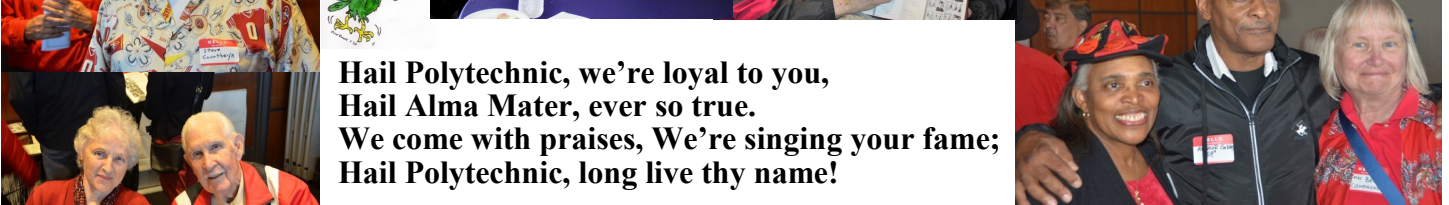
A Celebration of 100 Years

1914 — 2014



A Celebration of 100 Years

1914 — 2014



Hail Polytechnic, we're loyal to you,
Hail Alma Mater, ever so true.
We come with praises, We're singing your fame;
Hail Polytechnic, long live thy name!



Annual Polytechnic Home-Coming Luncheon

"Be True To Your School"



Sal Priolo S'50



Art Lidstrom S'57



Joy (Fletcher)
Montgomery S'58

Priolo (S'50), Art Lidstrom (S'57), Joy (Fletcher S'58) Montgomery, Kathy (Bertsch S'64) Compagno, Bob Ross (S'55), Salamah Locks ('63) and Marisa Farenzena. The committee will be meeting the first week in January to discuss locations and date for the luncheon (A target date of mid September 2015 is proposed). A proposed name for the luncheon is "Annual Polytechnic Home-Coming Luncheon" with the logo "Be True To Your School" ... the name and logo have not yet been formally agreed upon.

Of major concern is getting the when, where and registration information out to the alumni and faculty. Not having

from Bob Ross, S'55

The Poly Athletic Luncheon was not held this year due to the passing of Ray Montoroso earlier in the year. We have received lots of inquiries about the next Athletic luncheon asking if and when it would be held again. Many of the older classes no longer hold reunions and have looked forward to the Athletic Luncheon event as being an annual reunion for their class ... the Class of 1963 scheduled their 50 Year Reunion to be held at the 2013 Athletic Luncheon. This yearly Poly event was always looked forward to by both alumni and faculty with alumni from as far back as the 1940s attending.

Sadly, the Annual Poly Athletic Luncheon also passed with Ray and will no longer be held.

At the "Our Gang" Gathering this past June, there was much discussion about the luncheon and the possibility of reviving it. Discussions continued thru the summer months and we have learned that if it is revived, it cannot be called the "Poly Athletic Luncheon" nor will anyone have access to or permission to use Ray's Poly mailing list.

At the Cornerstone Dedication, Sal Priolo stepped forward and volunteered to form a committee to create a new annual Poly luncheon. A committee has formed and consists of Committee Chair Sal

access to the old mailing list means it must be completely rebuilt and that is my job. To that end, you will find forms, both for alumni and faculty, at the back of this newsletter and also on the Perennial Parrot web site under the "Luncheon" tab for you to send your email and "snail mail" information to us. We will send information by email to keep paper and postage costs down unless there is an email address problem or no email address in which cases the regular mail, "snail mail," will be used.

The database we are building will be used only for Poly functions and will be made available only to Poly alumni who are heading said Poly functions or for Poly alumni trying to contact other Poly alumni. We have no intention of sharing your information with your "favorite" junk mailers.

If you, or other Polyites you know, would like to attend the luncheon and have not yet done so, PLEASE fill out and return one of the forms to get on the mailing list. If a mid September 2015 date is selected, time is not on our side in rebuilding the mailing list.

Can you help? If you're so inclined, you bet. Especially when it comes to set-up and tear-down for the actual luncheon. If you can help in any capacity, please don't hesitate to contact Sal Priolo by [email](#) and let him know you want to be part of the team.

Ladies & Gentlemen, we now have, thanks to a fantastic Corner Stone Committee, a grand monument in place so future generations will know that our school, POLYTECHNIC, once stood grand and tall in that place. For us, all that is left are the memories of our high school days at Polytechnic to share with one another. I can think of no better way to share those memories with one another than by having a coming-together of all classes for a luncheon date each year. And when there is only one Polyite left, let that person sit at a restaurant table (Old Johnson's maybe), hold a wine glass high, and declare loudly ...

**HAIL POLYTECHNIC,
LONG LIVE THY NAME!**



Kathy (Bertsch)
Compagno S'64



Bob Ross S'55



San Francisco City Map ... 1927

Want a better look at it ... http://www.ronhenggeler.com/History/cartoon_map.htm



Poly Entertainers



Martha Wash,
Spring 1971

From Rolling Stone magazine:

Wash is very likely the most famous unknown singer of the Nineties; a powerful, gospel-weaned belter who first earned fame as a backup singer for disco king Sylvester

before forming the disco-pop duo the Weather Girls and recording the camp classic "It's Raining Men." In the early Nineties, however, Wash's booming, powerhouse vocals could be heard on the world's most ubiquitous dance songs, from Seduction's ["\(You're My One and Only\) True Love"](#) to Black Box's ["Strike It Up"](#) and ["Fantasy"](#) to C+C Music Factory's aforementioned Number One hit. At one point in 1991, Wash battled herself on the Billboard Hot Dance Club Songs, as "Gonna Make You Sweat" and Black Box's ["I Don't Know Anybody Else"](#) both bounced around the Top 5 for weeks on end.

"She merged a gospel voice into pop and dance music seamlessly," says RuPaul, who collaborated with Wash on 1998's ["It's Raining Men... the Sequel."](#) "Her voice speaks to both the church and a pop ear and was built to cut through the bass of a dance club. The timbre of her voice is

so distinctive and beautiful. A lot of gospel-based singers have come and gone in dance music, but she is *the one*." No less importantly, Wash became an accidental linchpin for artists' rights. After the singer brought various lawsuits against producers and record labels for proper credit and compensation, federal legislation was created making vocal credit mandatory for all albums and music videos.

But 25 years before, Wash was just a middle school kid who sang well enough to join the choir at a San Francisco high school. Her music teacher had raised enough money for the group to travel to Europe and record albums. By the time she graduated high school, Wash's choir had released four albums and the fledgling singer had settled on her career path.

Martha was born in 1953 in San Francisco; and here we are, confirmed Poly student in 1971, age 17: [This one is a long article, lots of her personal story; worth clicking to read all the details] <http://aumag.org/wordpress/2012/01/16/favorable-forecast/>

The Rolling Stone magazine article: <http://www.rollingstone.com/music/features/martha-wash-most-famous-unknown-singer-of-the-90s-20140902>

And the Martha Wash web site: <http://www.marthawash.com/>



ED BANTA, (AKA Eddie Neon) Class of 1964

He played right guard on the 1963 POLY football team, and he was inducted into the Poly Athletic Hall of Fame in 1995; and if you google Eddie Neon, you will see a very active performance schedule!!

Born in San Francisco in 1946, Bay area blues guitarist and vocalist Eddie Neon has been rocking the blues for over 40 years ... and having some big fun in the process.

Eddie's influences are many. He describes himself as "a self-taught S.F. bluesman cooked by local blues trends. Even after so many years of playing. I am still committed to honing my skills as a guitar player ... and remaining humble at the craft."

"I am a blues/R&B man from San Francisco, CA. I am cooked up by the culture of the bay area. I do my best to play hard & floor it! A lyric written by me for you, 'The blues takes no prisoners it's the soul that decides'. The Eddie Neon Group is a 6 piece R&B blues band with funk & jazz edges."



<http://www.reverbnation.com/eddieneon>
<http://myspace.com/eddieneonbluesband>

And do a Google Search on "Eddie Neon Band"

Editor Notes:

Just in case you can't quite make out the small print in the photo above the Eddie Neon Group will be appearing at *Biscuits & Blues* on Sunday, January 18, 2015. *Biscuits & Blues* is located at 401 Mason Street in San Francisco. For Reservations/Tickets call 415-292-2583 And our thanks to Kathy Compagno for forwarding the info on these two *Poly Performers* ... and to Marilyn Berg Cooper, Dian Barkan, Vince Aguiar, Patty Lewis McGuem, and Gwendolyn Ridgeway ... saw their names on all the emails ... THANKS ... Keep it up.

THE FOX THEATRE ... 1929 -1963

A SAN FRANCISCO TREASURE ... GONE

From Monty Montiel

In 1963 I was working down town on a remodel job at Market and ninth streets.

Across from where I was working I saw the wreckers ball slamming into the side of The Fox theatre; there were many mute observers with tears in their eyes, shaking their heads in disbelief.

The Fox theater was San Francisco's answer to the Taj Mahal, a glorious lesson in Art Deco ... and this magnificent theater was being destroyed.

You just had to be there to understand how the San Franciscans felt about losing this masterpiece of craftsmanship.

Monty



Time

Great things, it seems, are of the past
Here in our life
We see the worldly hours pass by,
We see man's strife,
But what is really done of worth?
What here will last?
What will resound in halls of fame
When life has passed?
And when slow time has rolled away,
Upon the sand,
What polished shell will stay alone
With pearly band?

Donald Boughton
Polytechnic, Spring 1920

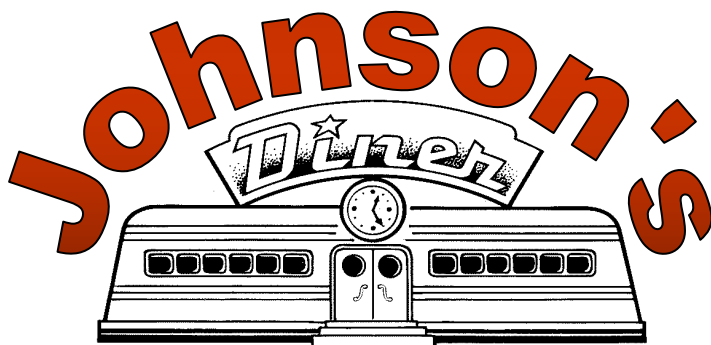
FOG

Lights gleam and glisten in the soft grey mist,
As candles do at dusk,
Or flash and vanish like a flying wisp,
And streets in dimness by the fog are kissed.

The schooners creek more on a fog-dim day
As at their wharves they're tied;
Half veiled in fog, they rest within the bay
Until their moorings break and they sail away.

A seagull curves round about and o'er the ships,
He blends in with the fog,
He soars on high, then gracefully he dips,
And now away into the fog he slips.

Georga Hunt
Polytechnic 1925



Where the elite meet to eat



Special Fruit Salad

Ingredients:

- 1 (29 ounce) can peach slices, undrained
- 1 (20 ounce) can pineapple chunks, undrained
- 1 (3 1/8 ounce) box dry vanilla instant pudding mix
- 1 lb strawberry's, stemmed and quartered
- 1 banana, sliced
- 1/2 pint blueberries
- 1 bunch grapes (red, green or mixed)
- 1-2 tablespoon sugar (optional)

Directions:

In a large bowl, combine peaches, pineapples, and vanilla pudding mix. This includes the juices from the cans. Mix well until the pudding is dissolved. Stir in strawberries, banana, blueberries, grapes, and sugar if desired. CHILL.

😊😊😊 **BONUS** 😊😊😊

GAME DAY MEATBALLS

- 1 jar of Grape Jelly
- 1 bottle Chili Sauce
- 1 package Meatballs

THROW in the crockpot for about 6 hours

ROOT FOR YOUR FAVORITE TEAM!

OUR GANG GATHERING 2016

"The Survey Says"

The envelope please ... What? Wrong show? Some people's kids!!!

Haven't had any more survey returns in the past month so will consider the survey closed. Tried to do the "Keep it simple, stupid" thing but asking folks to do a 1st, 2nd, and 3rd choice proved to be a catastrophic request on my part. And a few folks wrote essays on top of that. So we have some definite results and some not so definite results to report.

Do we change the month ... YES, we do. No question here, September was the clear favorite by an almost 3 to 1 vote.

As for the week of the month and days of the week ... very tight on these two. The Monday/Tuesday (go home Wednesday) and the Tuesday/Wednesday (go home Thursday) were only a vote apart with the Tuesday/Wednesday on top. The first and second week of the month had a tie vote. In 2016, the first full week is Labor Day with probable overlap into Tuesday so for the 2016 Gathering it will be the second week, Tuesday/Wednesday (go home Thursday) which is September 13, 14, 15. For those of you still working that gives you a year and a half to schedule around that week.

Welcome Room & Party Place ... For the Welcome Room a suite, large enough to comfortably hold the group won out by a 2 to 1 margin and for the Party Place location a suite also won but only by a couple of votes over remaining at the Neely's in Sparks. Although the cost of a suite is considerably lower at that time of year and in the middle of the week, the answers to the question of the Registration Fee and who should stay in the suite did not provide any clear cut answers. What to do? We would propose that for the Welcome Room we leave the suite on the table, check the room rate when the time approaches and if acceptable, reserve the suite, place a donation can out that evening, make it a BYOB/snacks affair and draw a name (or number) for someone to stay in the suite that night as a door prize. If the suite does not materialize we will just fall back on the Fireside Lounge ... unless someone should come up with a better idea.

For the Party Place ... For now remain at the Neely's and enjoy the wonderful friendship and comradery that we have experienced over the years. Just about everybody has offered to assist at either set-up and or tear-down to take the load off for the party. We'll let everyone know if anything else develops between now and then.

So mark your 2016 calendars ... or at least place a note in a conspicuous place ... that Gathering 2016 will be September 13 (Arrive Tuesday), 14 (Wednesday) and 15 (Depart Thursday).

PS ... We will call ahead for a "No Snow Week" on Donner Pass

Bob & Carolyn



In Memorium

Two of "Our Gang" are missing ...



Bonnie (Williams) Gedling (77)
Class of Spring 1955
1937 ~ Oct 15, 2014



Richard "Rich" Barnes (75)
Class of Spring 1957
1939 ~ Nov 2, 2014



Alfred "Al" Massagli (99)
Class of Fall 1933
Dec 30, 1914 ~ Oct 4, 2014

Robert Bowcock (96)

Class of Fall, 1934
Oct 12, 1917 ~ Sept 6, 2014



Andre Hicks (65)
Class of 1967 (?)
1949 ~ Aug 26, 2014

Kenneth Moore (65)

Class of 1967
Nov 30, 1948 ~ Nov 17, 2014



Barbara Jean (Chiolo) Rathbum (72)
Class of Spring 1960
July 6, 1942 ~ Dec 1, 2014

Barbara Charlotte (Leonard) Lyon
(84)
Class of 1948 (?)
1930 ~ Sept 9, 2014

Esther (Danel) Bruneman (81)
Class of 1951 (?)
1933 ~ Sept 24, 2014

Andre Norman (65)
Class of 1967 (?)
1949 ~ Sept 4, 2014

Marvin Williams (64)
Class of 68 (?)
1950 ~ Sept 13, 2014

Jacob "Jack" Bluth (90)
Class of 1942 (?)
July 20, 1924 ~ July 25, 2014



Johnny Land (72)

Retired Music Director

Poly 1970s

If you took a music class in the 70s, you will remember Mr. Land. You will find a nice story about his life written by Heather Knight, Chronicle Stall Writer back on October 28, 2005 shortly after his death, on the SF Gate web site at the link below.

<http://www.sfgate.com/bayarea/article/Johnny-Land-students-musical-muse-2562882.php>

William "Bill" Dunn (86)

Class of 1946

1928 ~ Nov 4, 2014

Bill Dunn was one of the leaders of the Farewell to Poly party in 1987. He also headed a yearly social for older Poly men for many years.

May the Parrot be with them on their journey



*If you don't leave your past in the past,
It will destroy your future.*

*Live for what today has to offer,
Not for what yesterday has taken away.*

Kibbles And Bits And Pieces

from Bob (S'55) & Carolyn (Bier, S'57) Ross
The Perennial Parrot Staff



This was a different issue for us ... MORE photos and LESS typing! Our kinda newsletter!



Wish we could have been at the Cornerstone Dedication. That's the only drawback to living at the Southern tip of Texas ... it takes three days just to get out of Texas. The photos showed us lots of smiling faces and Proud Parrots. And we got a few photos of folks going next door for some "greasy fries" ... doesn't matter what name you put on the outside of the building, it will always be "Johnson's." Can't wait to get out there next September to see the Cornerstone then step next door to celebrate with a burger and "greasy fries".



As you can see from this newsletter and our web site, work is underway to re-vive the annual Poly luncheon. The Luncheon committee, headed by Sal Priolo (S'50) meets the first week in January to select an official name, date and location for the luncheon. Hope they also decide on a menu ... We're hungry! Be sure to watch the Perennial Parrot web site for updates about the luncheon.

And if you know of another schoolmate who has attended the luncheons in the past and doesn't know of the effort to get it going again, please let them know and get a mailing list form to them. Getting the mailing list reassembled is a major task ... HELP!!!



**HAPPY
HOLIDAYS**



**SCHOOL
HYMN,**
by William Grosvenor,
Dec 1931



Hail Polytechnic, we're loyal to you,
Hail Alma Mater, ever so true.
We come with praises,
We're singing your fame;
Hail Polytechnic,
Long live thy name!



**ANOTHER VOLUME,
ANOTHER ISSUE,
ANOTHER CHRISTMAS,
ANOTHER NEW YEARS,**

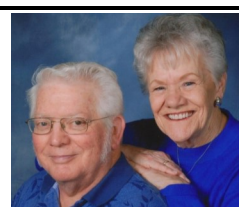
**Don't forget to hang your
stockings by the fireplace
and leave a glass of milk and
a few cookies for Santa ...**

A Think To Thought On ...

**I may not be the most important
person your life ...
I just hope that when you hear
my name ...
You smile and say,
That's my friend!**

**From our house to yours ...
The very best to you for the
Holidays and the coming New Year**

Bob & Carolyn



May The Parrot Be With You

FORGETTER BE FORGOTTEN

*My forgetter's getting better,
But my rememberer is broke
To you that may seem funny
But, to me, that is no joke*

*For when I'm 'here' I'm wondering
If I really should be 'there'
And, when I try to think it through,
I haven't got a prayer!*

*Oft times I walk into a room,
Say 'what am I here for?'
I wrack my brain, but all in vain!
A zero, is my score.*

*At times I put something away
Where it is safe, but, Gee!
The person it is safest from
Is, generally, me!*

*When shopping I may see someone ,
Say 'Hi' and have a chat,
Then , when the person walks away
I ask myself, 'who the hell was that?'*

*Yes, my forgetter's getting better
While my rememberer is broke,
And it's driving me plumb crazy
And that isn't any joke.*

CAN YOU RELATE???
*Please send this to everyone you know
because*

*I DON'T REMEMBER
WHO I SENT THIS TO!*

POLYTECHNIC High School Annual Luncheon ALUMNI Mailing List Form

<i>ALUMNI</i>	
<i>Class of (Year & Spring or Fall)</i>	
<i>Last Name</i>	
<i>First Name</i>	
<i>Maiden Name</i>	
<i>EMAIL</i>	
<i><u>SPOUSE ... IF POLY ALUMNI</u></i>	
<i>Class of (Year & Spring or Fall)</i>	
<i>Last Name</i>	
<i>First Name</i>	
<i>Maiden Name</i>	
<i>EMAIL</i>	
<i>Street Address</i>	
<i>City, State, Zip</i>	
<i>Home Phone</i>	
<i>Cell Phone</i>	

Return form to:
Bob Ross
1400 Zillock Rd Lot V26
San Benito, TX 78586
OR
polyluncheon@gmail.com

POLYTECHNIC High School Annual Luncheon FACULTY Mailing List Form

<u>FACULTY Member</u>	
<i>Class of (Year & Spring or Fall)</i>	
<i>Last Name</i>	
<i>First Name</i>	
<i>Maiden Name</i>	
<i>EMAIL</i>	
<i>Years Taught at Poly</i>	
<i>Subjects Taught</i>	
<u>SPOUSE</u>	
<i>SPOUSE First Name</i>	
<i>Maiden Name (If Poly Alumni)</i>	
<i>Class of (Year & Spring or Fall – if Poly Alumni)</i>	
<i>EMAIL (If Poly Alumni)</i>	
<i>Street Address</i>	
<i>City, State, Zip</i>	
<i>Home Phone</i>	
<i>Cell Phone</i>	

Return form to:
Bob Ross
1400 Zillock Rd Lot V26
San Benito, TX 78586
OR
polyluncheon@gmail.com